

Technical data

LEO 30T

TEUPEN
...access redefined

since '77

PERFORMANCE

| | |
|-------------------------------------------|-----------------|
| Working height, max. | 30,00 m |
| Platform height, max. | 28,00 m |
| Horizontal outreach, max. (200 kg) | 14,00 m |
| Horizontal outreach, max. (80 kg) | 15,70 m |
| Platform capacity, max. | 200 kg |
| Job, movable | 180 ° |
| Platform, rotatable | 180 ° |
| Turntable rotation, max. | 450 ° |
| To be jacked up on ground slope of | 16,7 ° / 30,0 % |
| Track drive, height- and width-adjustable | 22 / 17 cm |
| Gradeability, max. | 16,7 ° / 30,0 % |
| Slope angle, max. | 16,7 ° / 30,0 % |
| Travel speed, max. | 3,0 km/h |

MEASUREMENTS*

| | |
|---------------------------------------------------|-----------------|
| Platform (height) (A) | 1,10 m |
| Platform (length) (B) | 1,20 m |
| Platform (width) (C) | 0,80 m |
| Length (D) | 7,20 m |
| Length without platform (E) | 7,20 m |
| Height (F) | 1,98 m |
| Width, min. (G) | 1,58 m |
| Ground clearance, max. (H) | 0,27 m |
| Track (length x width) (I) | 1,92 x 0,25 m |
| Outrigger footprint both side wide (length) (J) | 5,30 m |
| Outrigger footprint both side wide (width) (K) | 4,75 m |
| Outrigger footprint one side narrow (length) (L) | 6,64 m |
| Outrigger footprint one side narrow (width) (M) | 3,95 m |
| Outrigger footprint both sides narrow (width) (N) | 2,99 m |
| Outrigger plate (length x width) | 0,31 m x 0,22 m |

WEIGHT*

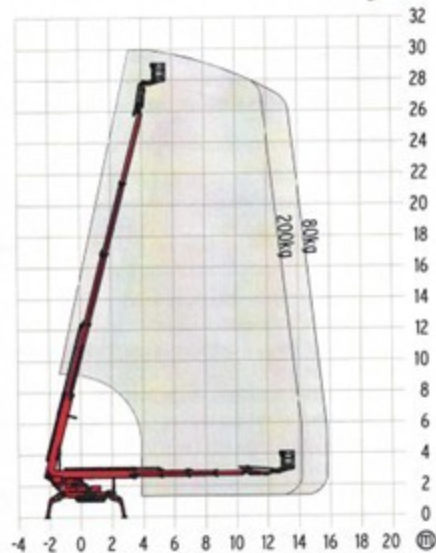
| | |
|--------------------------------------|------------------------|
| Total weight | 4300 kg |
| Live load in travelling position | 3,70 kN/m ² |
| Live load in working position | 2,00 kN/m ² |
| Point load per outrigger plate, max. | 26,00 kN |

POWER SOURCES

| | |
|------------------------------------|---------------------------------|
| Standard power sources: | |
| Electric motor | (country-specific 1-phase) |
| Combustion engine (Diesel) | Kubota D902 (16,1 kW / 21,6 hp) |
| Optional power source: | |
| Battery drive | 80 V |
| Fuel tank capacity (Diesel engine) | 40,0 l |

POWER SUPPLY

| | |
|------------------------|------------------------------|
| Electric current, max. | country-specific, on request |
|------------------------|------------------------------|



* The technical data may deviate +/- 1 % from the specified values.
* Weight and dimensions may vary depending on options and accessories.

STANDARDS

2006/42/EG-Machinery directive
Harmonised standard EN280:2001 • A2:2009; 2004/108/EG (EMV)
2000/14/EG (Noise emission directive)

www.**TEUPEN**.com